

# Specifications:

Items	Specifications
<b>AI Module (Artificial Intelligence Diagnosis Technology)</b>	
Weak Light ONU Troubleshooting	Test End Setting: 1) Normal mode (Fiber link map function) 2) Fiber end is ONU (Test from splitter towards to ONU) 3) Fiber end is Splitter (Test from ONU towards to splitter) First connector insertion loss and the ONU/Splitter connectivity state can be tested
<b>ONU Module (ONU Status Identification)</b>	
ONU Status Type	ONU Online, ONU Offline, No ONU(Disconnected), Rogue ONU
<b>OTDR</b>	
Wavelength	Wavelength: 1550nm/1625nm/1650nm is optional (3 select 1)
Dynamic Range	20dB
Deadzone	Event dead zone: 1m, Attenuation dead zone: 4m
Test Range	500m~120km
Pulse Width	3ns~20us
Distance Accuracy	$\pm(1m+Test\ distance\times 3\times 10^{-5}+Sampling\ resolution)$ (excluding IOR uncertainty)
<b>10G PON Optical Power Meter</b>	
Calibrated Wavelength	Simultaneously display 1490nm, 1577nm and 1270/1310nm power
Test Range	-40~+10dBm
Test Accuracy	$\pm 0.35dB$
<b>Stable Laser Source</b>	
Wavelength	Consistent with OTDR
Output Power	>-12dBm
Working Mode	CW/270Hz/1kHz/2kHz
<b>VFL</b>	
Wavelength	650nm $\pm$ 10nm
Output Power	10mw; CW/1Hz/2Hz
<b>RJ45 Cable Test</b>	
Line Sequence Standard	TIA-568A or TIA-568B standard
<b>Others</b>	
Optical Interface	2*SC/UPC port, 1*2.5mm universal port for VFL
Electric Interface	2*RJ45 port, RJ45 remote module, Type-C charging/data port
Wireless	Bluetooth connection with Android phone app
Display	3.5 inch color LCD
Data Storage	Pluggable 16GB micro SD card
Battery	5000mAh lithium battery
Working Condition	-10 $^{\circ}$ C~+50 $^{\circ}$ C/ 0~85% (Non condensing)
Dimension/Weight	192.9L $\times$ 93.8W $\times$ 47Hmm/0.58kg

\* Product specifications and descriptions are subject to change without prior notice



FTTX LAST MILE FIBER TROUBLESHOOTING

ONU STATUS IDENTIFICATION

10G PON POWER METER

60KM 1650NM OTDR

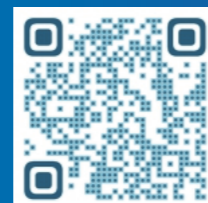
STABLE LASER SOURCE

10MW VFL

BLUETOOTH CONNECTION

# FHO1500PLUS OPTICAL EXPLORER

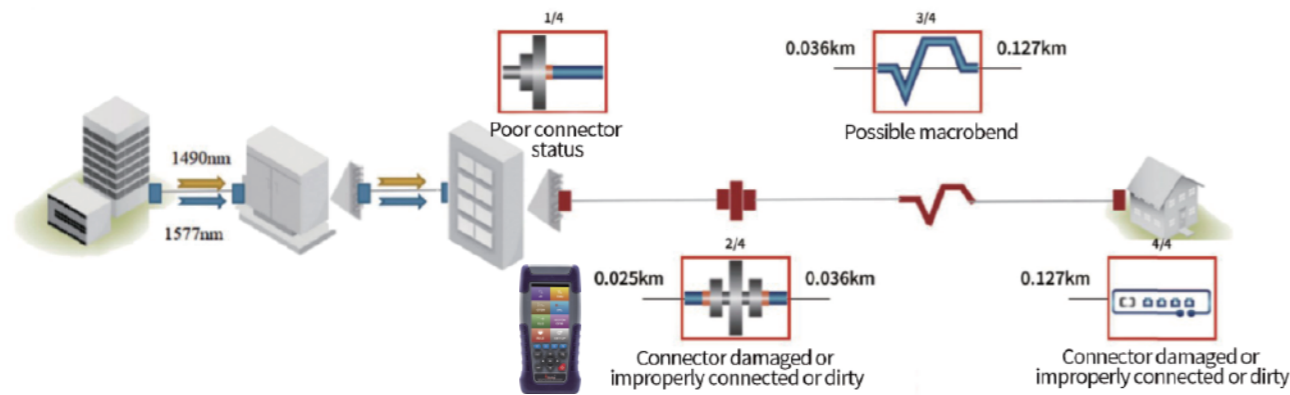
LET'S GO IN THE GRANDWAY!



**FTTX last mile fiber troubleshooting**

Innovative ways to accelerate the activation and maintenance of FTTX service

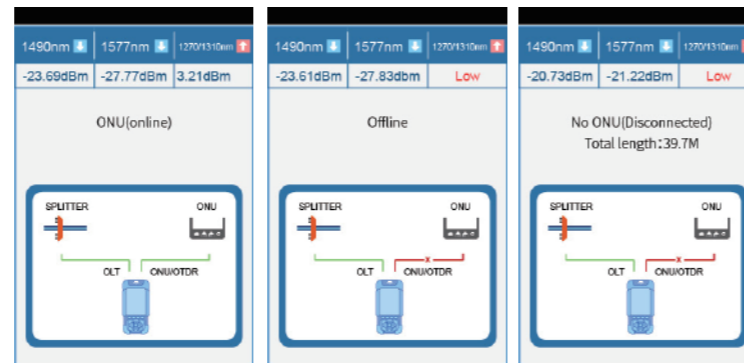
- FHO1500PLUS support one button test at splitter or ONU side, the downstream 1490/1577nm and upstream 1310/1270nm power will display at the same time, also the last mile fiber quality will be detected clearly
- First connector loss is measurable
- Excellent deadzone(1m/4m) to detect short 3m patchcord and the big attenuation loss within 10 meters  
Splitter and ONU connection quality of the last mile fiber



**ONU status identification**

Connect in series to the fiber link to detect the ONU status

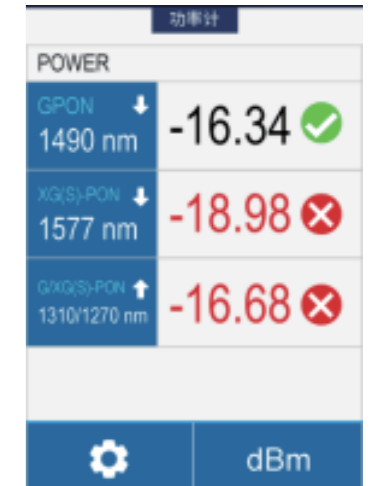
- ONU Online, ONU Offline, No ONU(Disconnected), Rogue ONU
- 100% accuracy for Online ONU identification
- Release the occupied splitter port without ONU connected



**10G PON Optical Power Meter**

Built-in High Isolation Filter

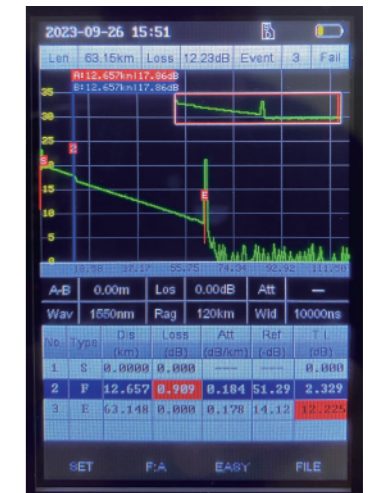
- Precise selective measurement of 1490, 1577nm in Combo PON
- Simultaneously display 1490nm, 1577nm and 1270/1310nm power
- Support PASS/FAIL auto judgement



**60km OTDR!**

Ultra short deadzone, High-precision measurement

- Support live fiber testing
- 3m continuous patchcord identification
- Fiber attenuation loss detection within 10m



**Bluetooth connection**

- OTDR function wireless control on mobile APP
- Support for sending test data on mobile devices
- Support PING testing

