

**DIGITUS Professional CAT 6, Class E Patch Panel**

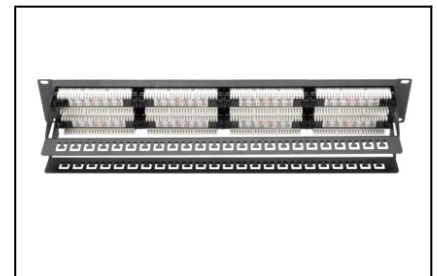
DN-91648U 4016032241560



**DIGITUS CAT 6, Class E patch panel, unshielded**  
**48-port RJ45, 8P8C, LSA, 2U, rack mount, color black RAL 9005**

**Best performance and link quality for your network.**

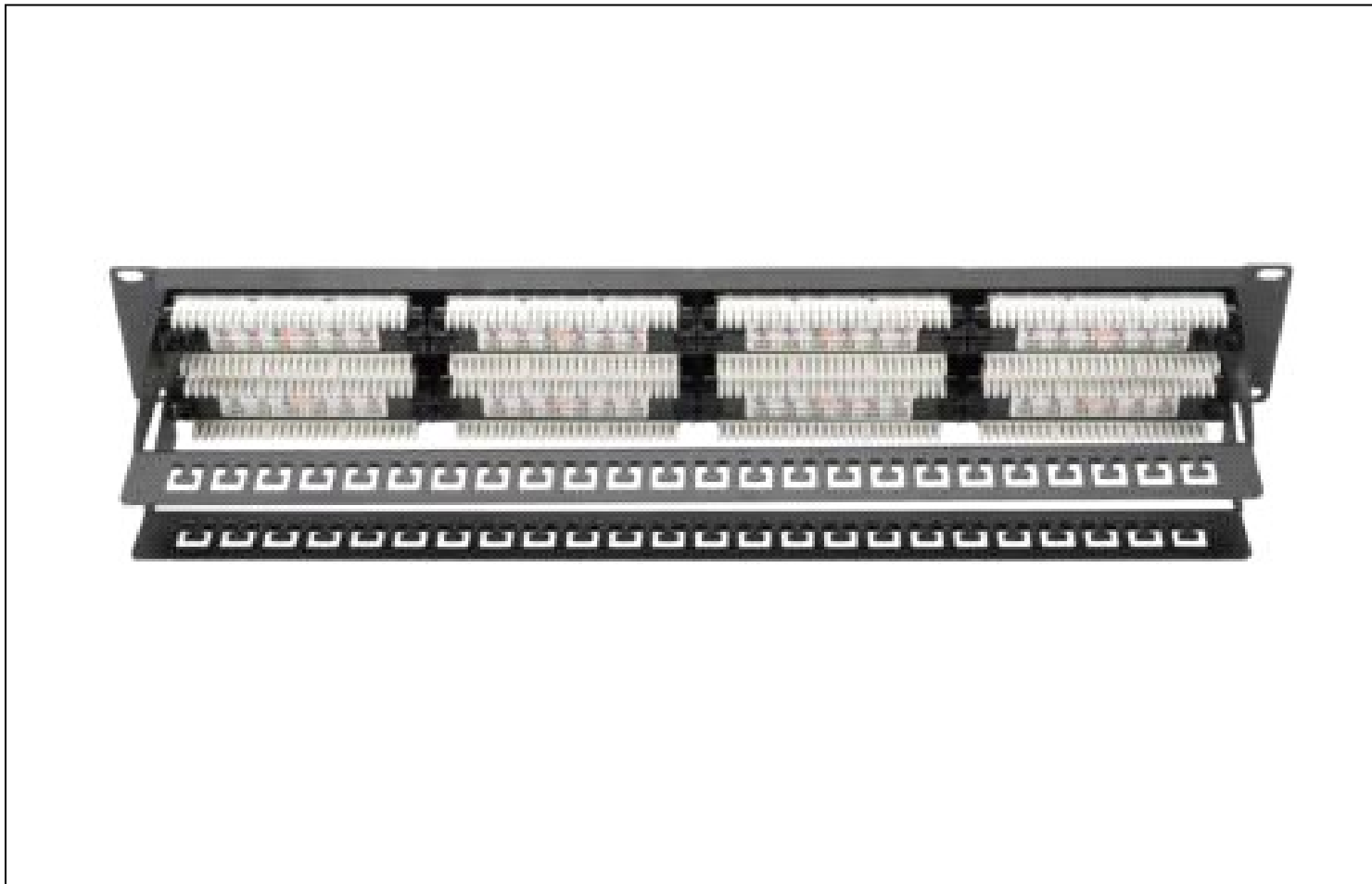
The unshielded CAT 6 Patch Panel from DIGITUS® is available as 16- or 24-port (1 Hight unit) or 48-port version (2 Hight units). It is manufactured acc. to Link Performance Class E, for up to 250 MHz, EN 50173 and ISO/IEC 11801. It is UL certified. The housing is made of 1.5 mm galvanized cold-rolled steel is is therefore perfectly suitable for 19" rack mounting.



- 1 Transmission properties: Category 6
- 1 Area of application: Up to 250 MHz, 1GBase-T, PoE
- 1 Norms: ISO/IEC 11801 2nd Ed., EN 50173-1, EIA/TIA 568-C
- 1 General properties:
- 1 Suitable for 483 mm (19") cabinet mounting
- 1 RJ45 female, 8P8C
- 1 Cable installation via LSA strips, color coded according to EIA/TIA 568 A & B
- 1 Cable fixing with cable tie
- 1 Mechanical properties:
- 1 Housing material: 1.5 mm galvanic cold rolled steel, acc. to EN1.4301, UNS S30400, AISI 304 and LMSAD110
- 1 RJ45 female material: ABS UL 94V-0
- 1 RJ45 female contact: Tinned phosphor bronze, 0.5 µ gold-plated contact
- 1 RJ45 shielding: Tinned bronze
- 1 LSA termination clamp: Krone LSA+, UL 94V-2, zinc plated phosphor bronze
- 1 Ground wire: Not included
- 1 Conductor plate: FR4, UL 94V-0
- 1 Physical properties:
- 1 Insertion force: 30N max. (IEC 60603-7-5)
- 1 Retention strength: 7.7 kg between jack and plug
- 1 Operation temperature: -20° C to +70 °C (ISO/IEC 11801, EN 50173-1, ANSI/TIA/EIA 568 C)
- 1 Mating cycles female: > 750 acc. to ISO/IEC 11801, IEC 60603-7-5
- 1 Clamp: > 200 acc. to ISO/IEC 11801, IEC 60603-7-5
- 1 IDC wire size: 22 – 26 AWG solid and stranded conductor
- 1 Insulation resistance: > 500 MOhm
- 1 Contact resistance: < 20 MilliOhm
- 1 Dielectric strength: 1000 VDC (Contact/Contact), 1500 VDC (Contact/Ground)
- 1 Category: CAT 6
- 1 Ports: 48
- 1 Color: black, RAL 9005

**DIGITUS Professional CAT 6, Class E Patch Panel**

DN-91648U 4016032241560



→ **Logistics**

	Number (pcs)	Weight (kg)	Depth (cm)	Width (cm)	Height (cm)	cm³
Packaging Unit Carton	8	9,50	58,00	34,00	33,00	65076,00
Packaging Unit Inside	1	1,19	7,50	56,00	15,00	6300,00
Packaging Unit Single	1	1,19	7,50	56,00	15,00	6300,00
Net single without Packaging	1	0,92	3,00	48,50	9,00	1309,50

→ **Packaging type**

